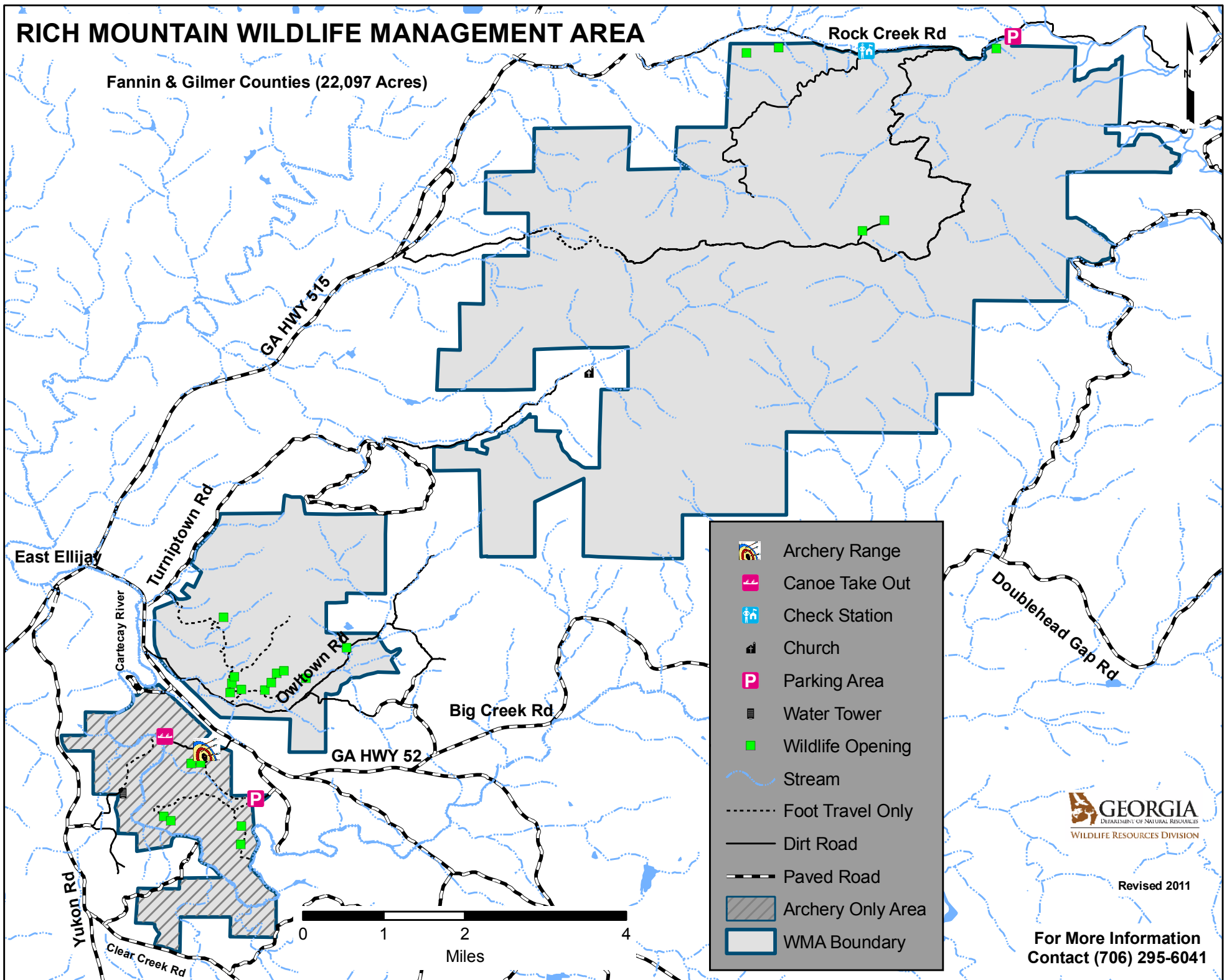


# RICH MOUNTAIN WILDLIFE MANAGEMENT AREA

Fannin & Gilmer Counties (22,097 Acres)



	Archery Range
	Canoe Take Out
	Check Station
	Church
	Parking Area
	Water Tower
	Wildlife Opening
	Stream
	Foot Travel Only
	Dirt Road
	Paved Road
	Archery Only Area
	WMA Boundary

**GEORGIA**  
DEPARTMENT OF NATURAL RESOURCES  
WILDLIFE RESOURCES DIVISION

Revised 2011

**For More Information  
Contact (706) 295-6041**