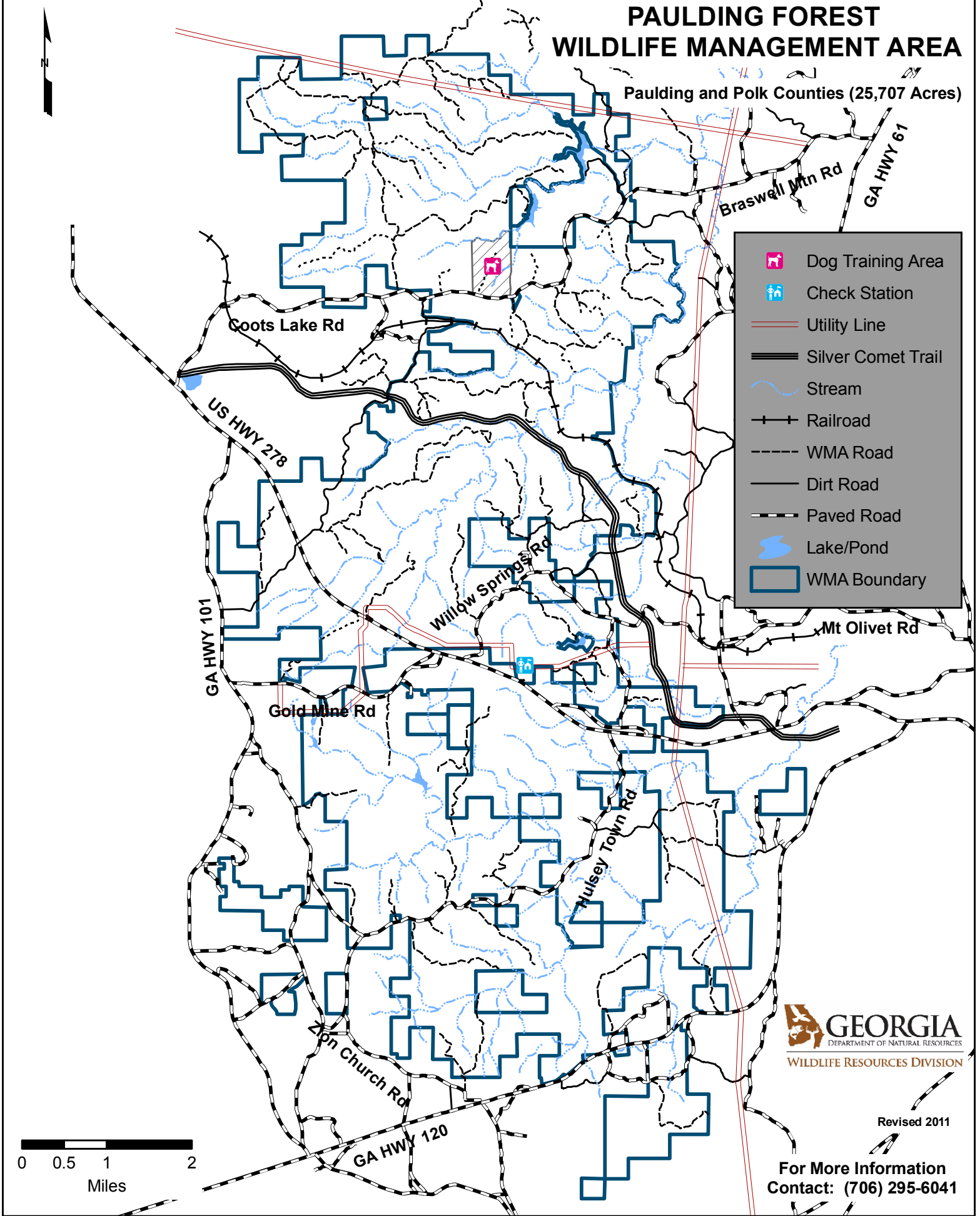


# PAULDING FOREST WILDLIFE MANAGEMENT AREA

Paulding and Polk Counties (25,707 Acres)

- Dog Training Area
- Check Station
- Utility Line
- Silver Comet Trail
- Stream
- Railroad
- WMA Road
- Dirt Road
- Paved Road
- Lake/Pond
- WMA Boundary



Revised 2011

For More Information  
Contact: (706) 295-6041