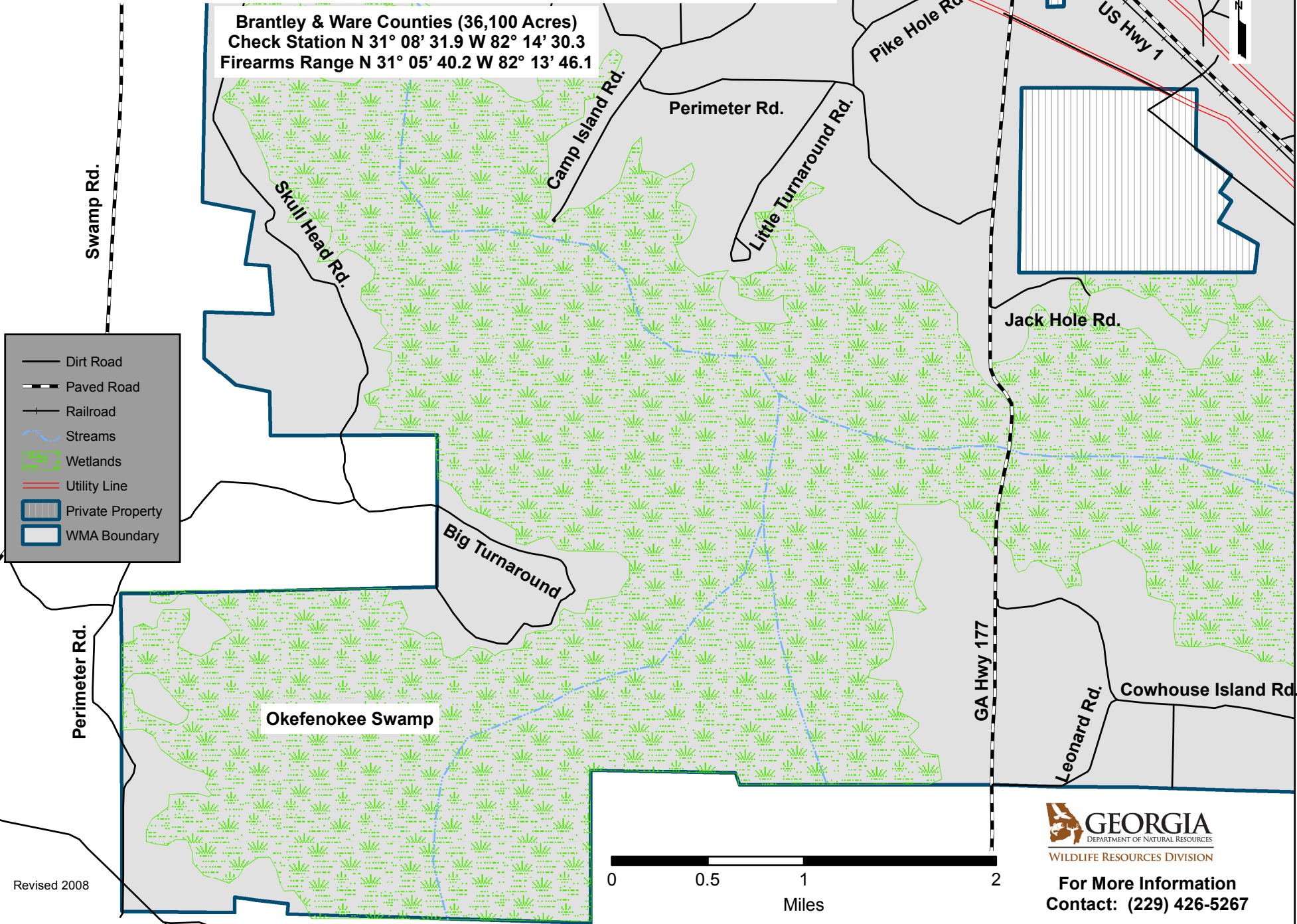


DIXON MEMORIAL WILDLIFE MANAGEMENT AREA (Southwest Section)

Brantley & Ware Counties (36,100 Acres)
 Check Station N 31° 08' 31.9 W 82° 14' 30.3
 Firearms Range N 31° 05' 40.2 W 82° 13' 46.1



- Dirt Road
- Paved Road
- Railroad
- Streams
- Wetlands
- Utility Line
- Private Property
- WMA Boundary

Revised 2008



**For More Information
 Contact: (229) 426-5267**