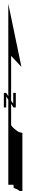


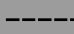



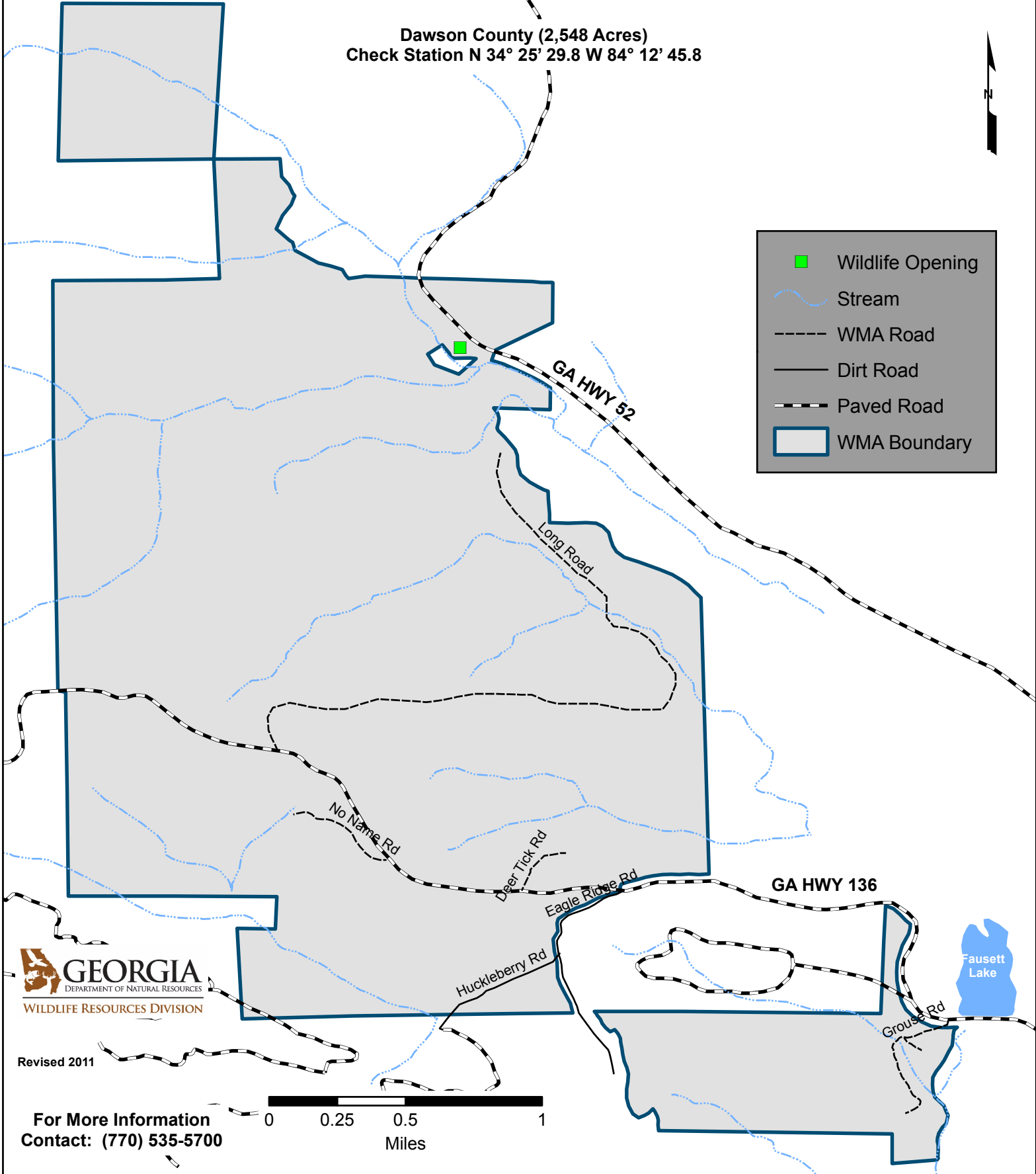


DAWSON FOREST WILDLIFE MANAGEMENT AREA BURNT MOUNTAIN TRACT

Dawson County (2,548 Acres)
Check Station N 34° 25' 29.8 W 84° 12' 45.8



-  Wildlife Opening
-  Stream
-  WMA Road
-  Dirt Road
-  Paved Road
-  WMA Boundary



 **GEORGIA**
DEPARTMENT OF NATURAL RESOURCES
WILDLIFE RESOURCES DIVISION

Revised 2011

For More Information
Contact: (770) 535-5700

