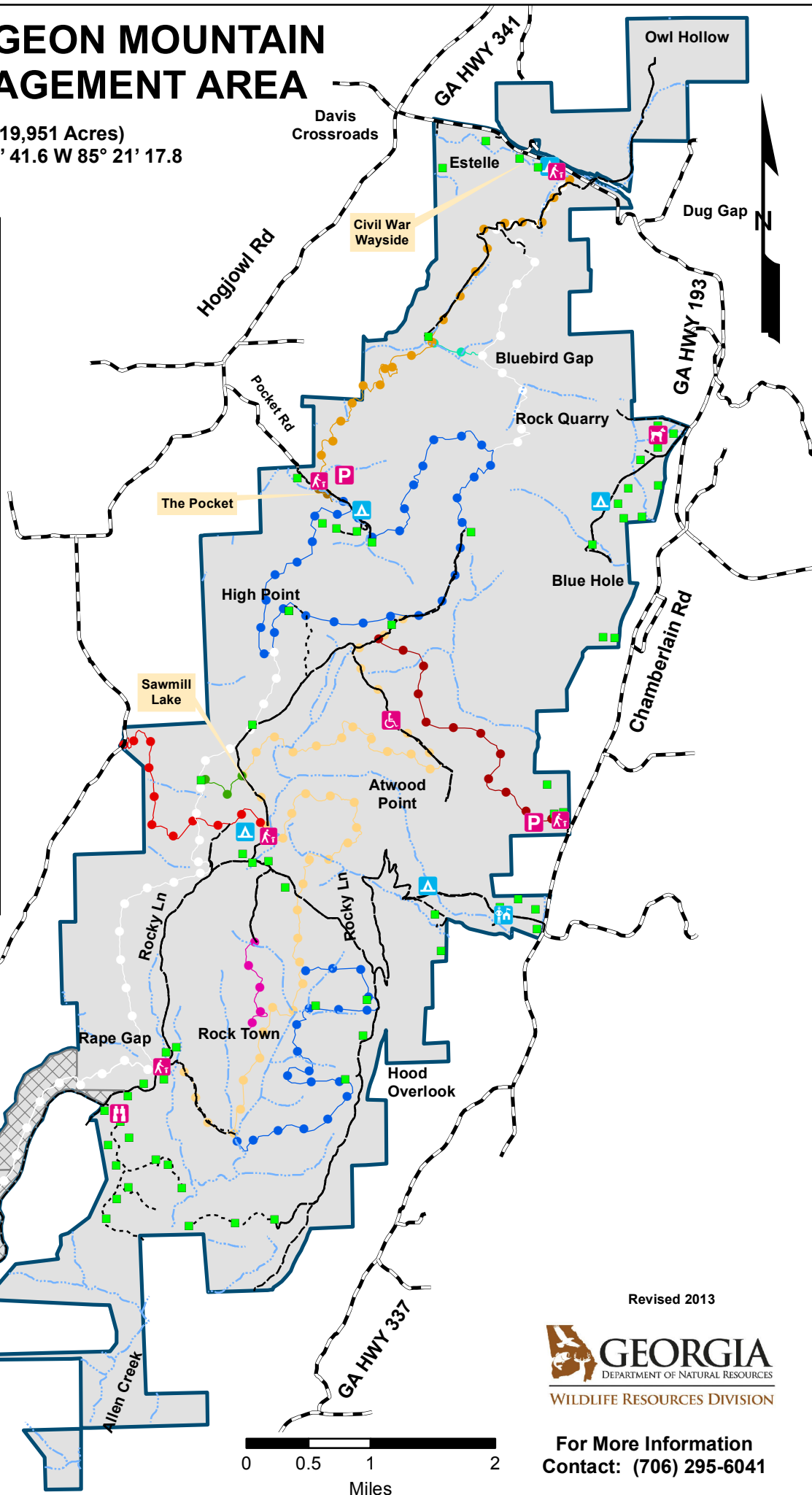


CROCKFORD-PIGEON MOUNTAIN WILDLIFE MANAGEMENT AREA

Walker County (19,951 Acres)
Check Station N 34° 39' 41.6 W 85° 21' 17.8

| | |
|--|---|
| | Trailheads |
| | Camping Area |
| | Check Station |
| | Disabled Hunter Access |
| | Dog Training Area |
| | Parking Area |
| | Wildlife Viewing Area |
| | Wildlife Opening |
| | West Brow |
| | Bluff Trail Connector |
| | Cove Loop |
| | WMA Road |
| | Paved Road |
| | Foot Travel Only |
| | Stream |
| | Atwood-Orange |
| | Bear Lake Cut Through |
| | Bluebird Gap Shrotcut |
| | Cane Trail |
| | Chamberlain Trail |
| | Hood Loop |
| | Estelle-Orange Trail |
| | Hogjowl Trail |
| | Pocket Loop Trail-Blue |
| | Rocktown Trail - Hiking Only |
| | Shirley Miller Wildflower Trail (Boardwalk) |
| | West Brow-White |
| | Dove Field |
| | Pond |
| | Centerfire Rifles & Muzzleloading Firearms Prohibited |
| | Zahnd Natural Area |
| | WMA Boundary |



Revised 2013



For More Information
Contact: (706) 295-6041

