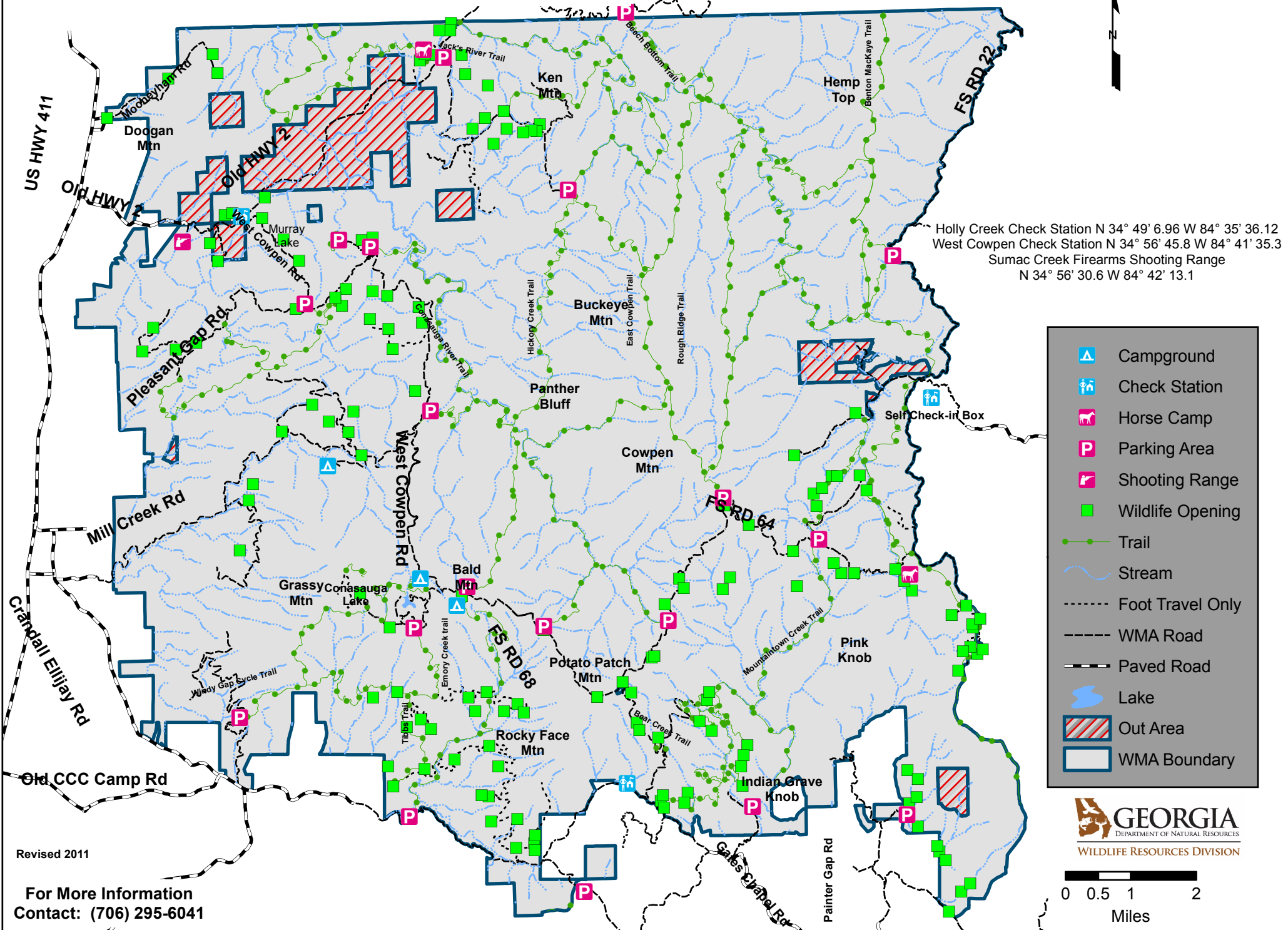


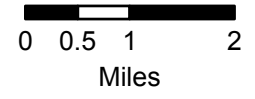
COHUTTA WILDLIFE MANAGEMENT AREA

Fannin, Gilmer & Murray Counties (96,503 Acres)



Holly Creek Check Station N 34° 49' 6.96 W 84° 35' 36.12
 West Cowpen Check Station N 34° 56' 45.8 W 84° 41' 35.3
 Sumac Creek Firearms Shooting Range
 N 34° 56' 30.6 W 84° 42' 13.1

- Campground
- Check Station
- Horse Camp
- Parking Area
- Shooting Range
- Wildlife Opening
- Trail
- Stream
- Foot Travel Only
- WMA Road
- Paved Road
- Lake
- Out Area
- WMA Boundary



Revised 2011
 For More Information
 Contact: (706) 295-6041