

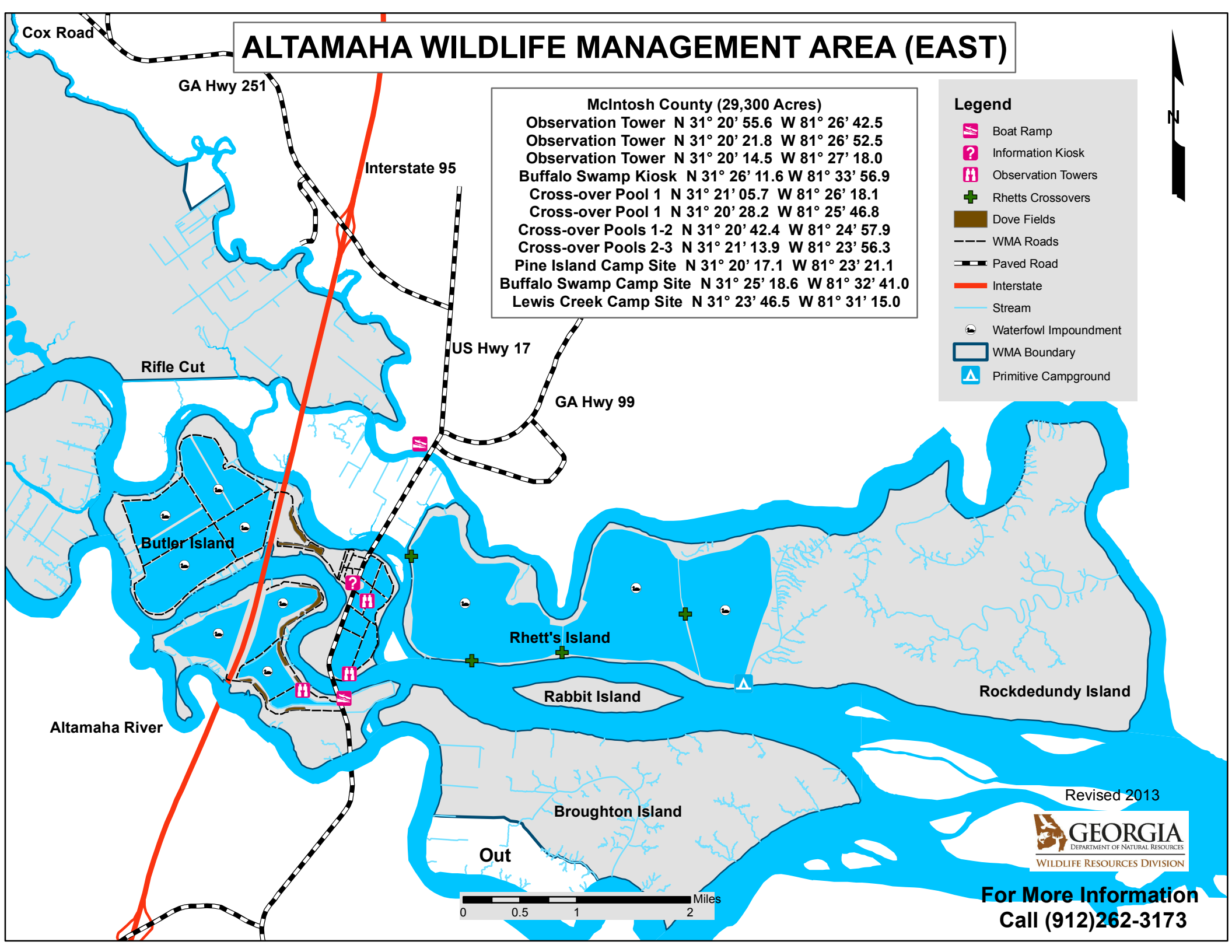
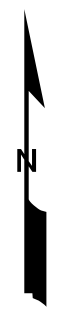
ALTAMAHA WILDLIFE MANAGEMENT AREA (EAST)

McIntosh County (29,300 Acres)

Observation Tower	N 31° 20' 55.6	W 81° 26' 42.5
Observation Tower	N 31° 20' 21.8	W 81° 26' 52.5
Observation Tower	N 31° 20' 14.5	W 81° 27' 18.0
Buffalo Swamp Kiosk	N 31° 26' 11.6	W 81° 33' 56.9
Cross-over Pool 1	N 31° 21' 05.7	W 81° 26' 18.1
Cross-over Pool 1	N 31° 20' 28.2	W 81° 25' 46.8
Cross-over Pools 1-2	N 31° 20' 42.4	W 81° 24' 57.9
Cross-over Pools 2-3	N 31° 21' 13.9	W 81° 23' 56.3
Pine Island Camp Site	N 31° 20' 17.1	W 81° 23' 21.1
Buffalo Swamp Camp Site	N 31° 25' 18.6	W 81° 32' 41.0
Lewis Creek Camp Site	N 31° 23' 46.5	W 81° 31' 15.0

Legend

- Boat Ramp
- Information Kiosk
- Observation Towers
- Rhett's Crossovers
- Dove Fields
- WMA Roads
- Paved Road
- Interstate
- Stream
- Waterfowl Impoundment
- WMA Boundary
- Primitive Campground



Revised 2013



For More Information
Call (912)262-3173

