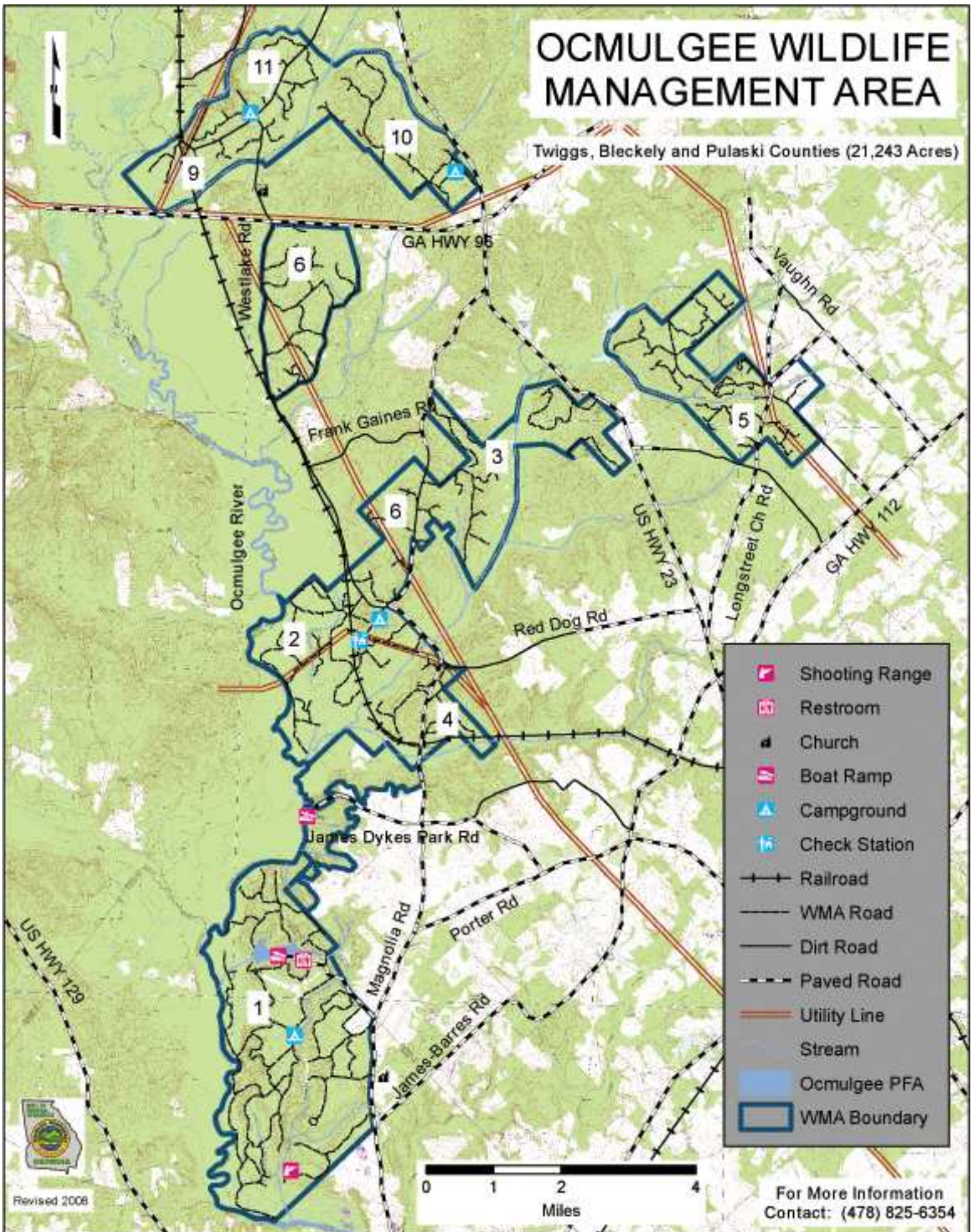


OCMULGEE WILDLIFE MANAGEMENT AREA

Twiggs, Bleckely and Pulaski Counties (21,243 Acres)



- Shooting Range
- Restroom
- Church
- Boat Ramp
- Campground
- Check Station
- Railroad
- WMA Road
- Dirt Road
- Paved Road
- Utility Line
- Stream
- Ocmulgee PFA
- WMA Boundary

0 1 2 4
Miles

For More Information
Contact: (478) 825-6354

Revised 2008