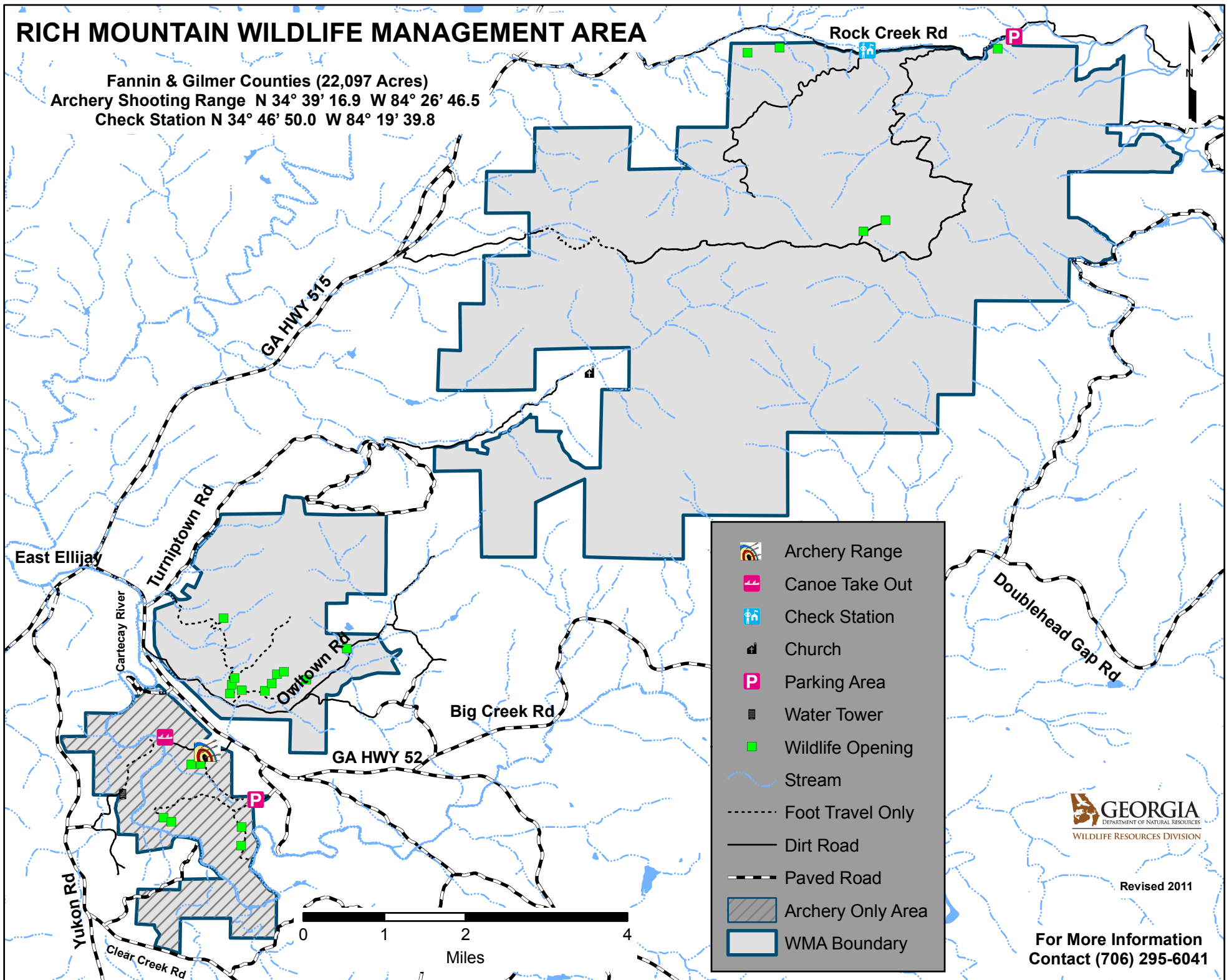


RICH MOUNTAIN WILDLIFE MANAGEMENT AREA

Fannin & Gilmer Counties (22,097 Acres)
Archery Shooting Range N 34° 39' 16.9 W 84° 26' 46.5
Check Station N 34° 46' 50.0 W 84° 19' 39.8



 **GEORGIA**
DEPARTMENT OF NATURAL RESOURCES
WILDLIFE RESOURCES DIVISION

Revised 2011

**For More Information
Contact (706) 295-6041**