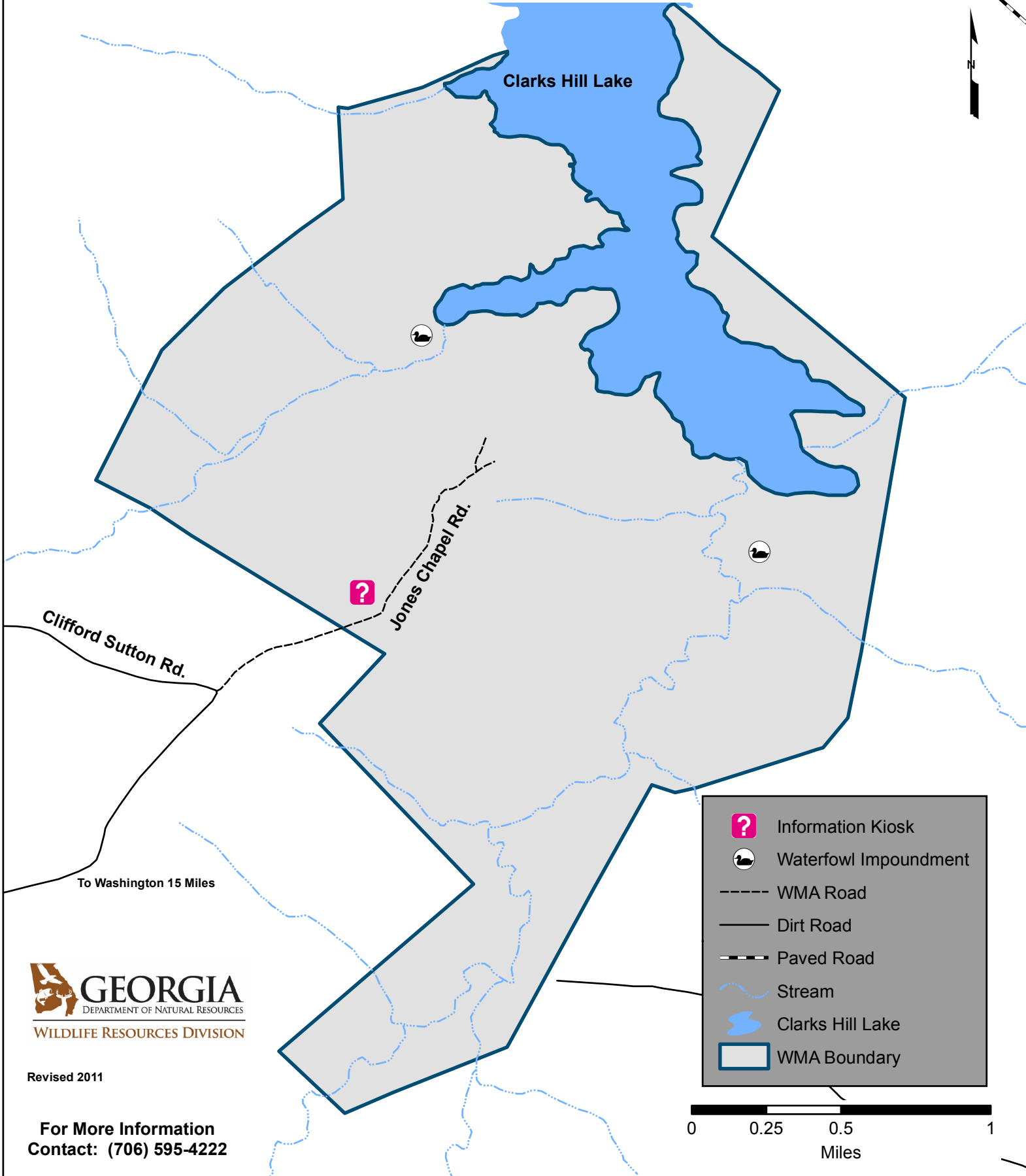


FISHING CREEK WILDLIFE MANAGEMENT AREA

Wilkes & Lincoln Counties (2,900 Acres)
Sign-In Kiosk N 33° 51' 24.73 W 82° 35' 23.89



- Information Kiosk
- Waterfowl Impoundment
- WMA Road
- Dirt Road
- Paved Road
- Stream
- Clarks Hill Lake
- WMA Boundary

 **GEORGIA**
DEPARTMENT OF NATURAL RESOURCES
WILDLIFE RESOURCES DIVISION

Revised 2011

For More Information
Contact: (706) 595-4222

0 0.25 0.5 1
Miles