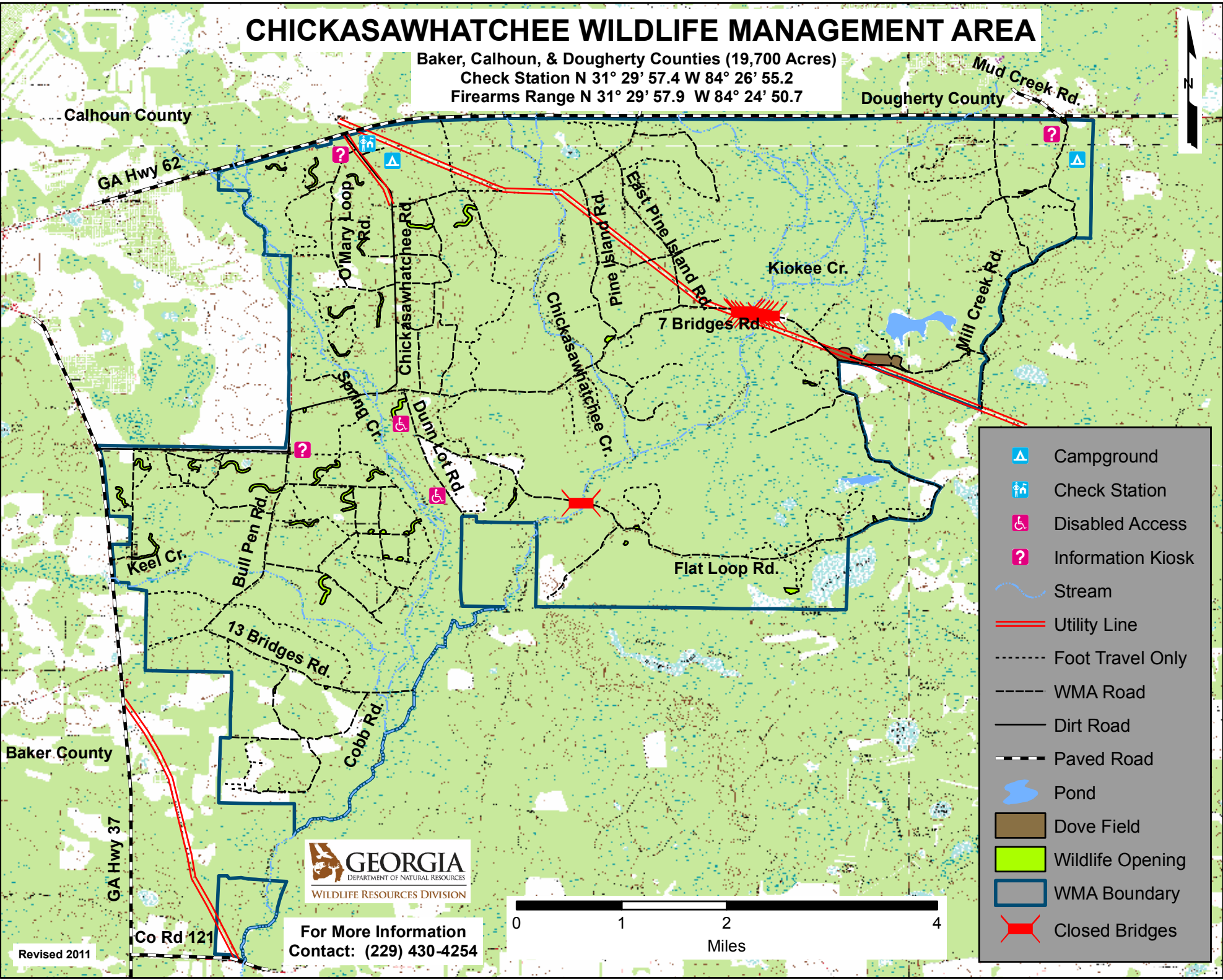


CHICKASAWHATCHEE WILDLIFE MANAGEMENT AREA

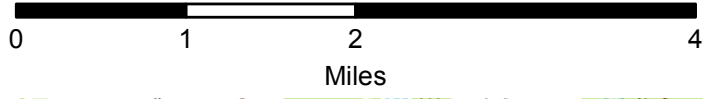
Baker, Calhoun, & Dougherty Counties (19,700 Acres)
 Check Station N 31° 29' 57.4 W 84° 26' 55.2
 Firearms Range N 31° 29' 57.9 W 84° 24' 50.7



- Campground
- Check Station
- Disabled Access
- Information Kiosk
- Stream
- Utility Line
- Foot Travel Only
- WMA Road
- Dirt Road
- Paved Road
- Pond
- Dove Field
- Wildlife Opening
- WMA Boundary
- Closed Bridges



For More Information
 Contact: (229) 430-4254



Revised 2011