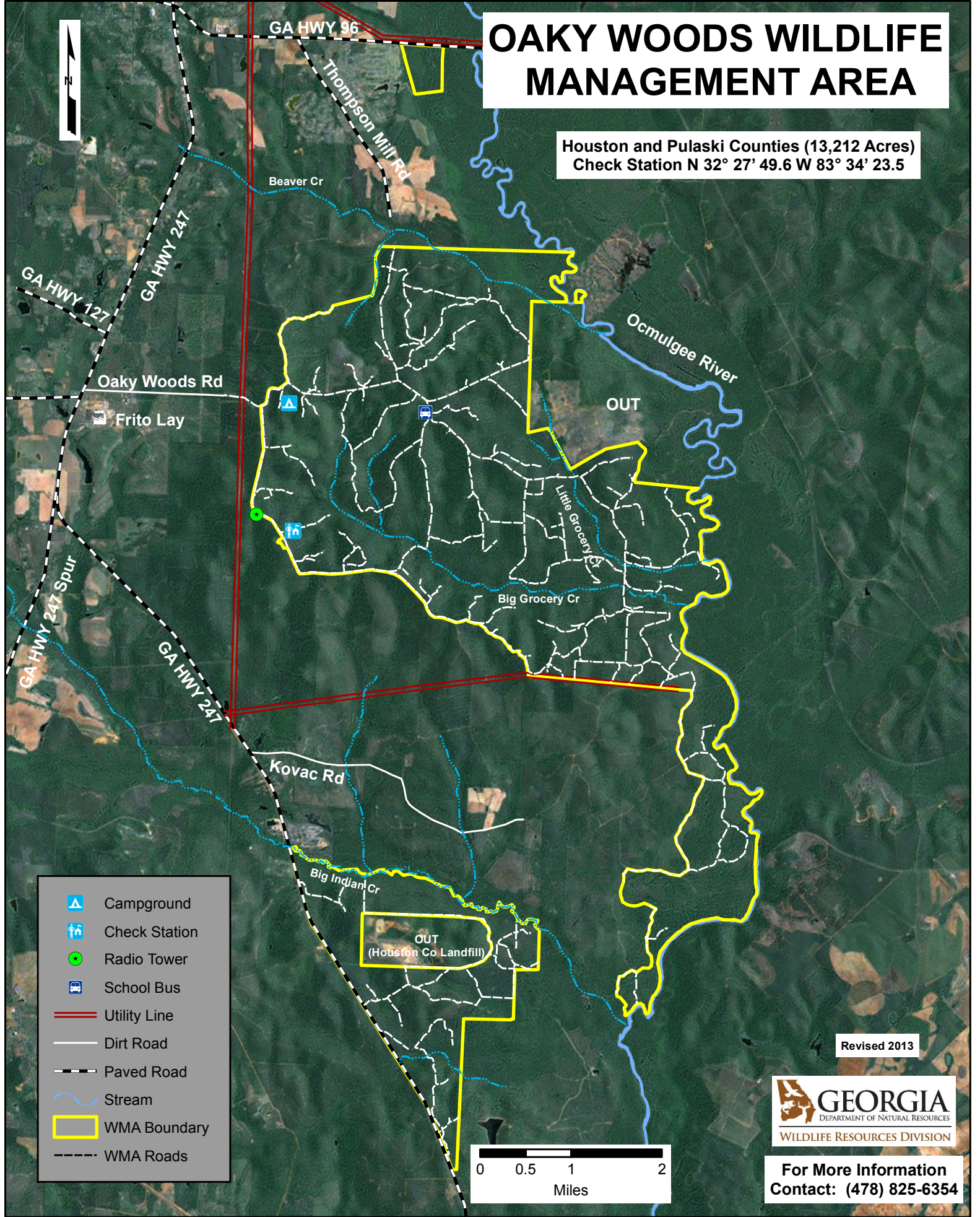


OAKY WOODS WILDLIFE MANAGEMENT AREA

Houston and Pulaski Counties (13,212 Acres)
Check Station N 32° 27' 49.6" W 83° 34' 23.5"



- Campground
- Check Station
- Radio Tower
- School Bus
- Utility Line
- Dirt Road
- Paved Road
- Stream
- WMA Boundary
- WMA Roads



Revised 2013



For More Information
Contact: (478) 825-6354