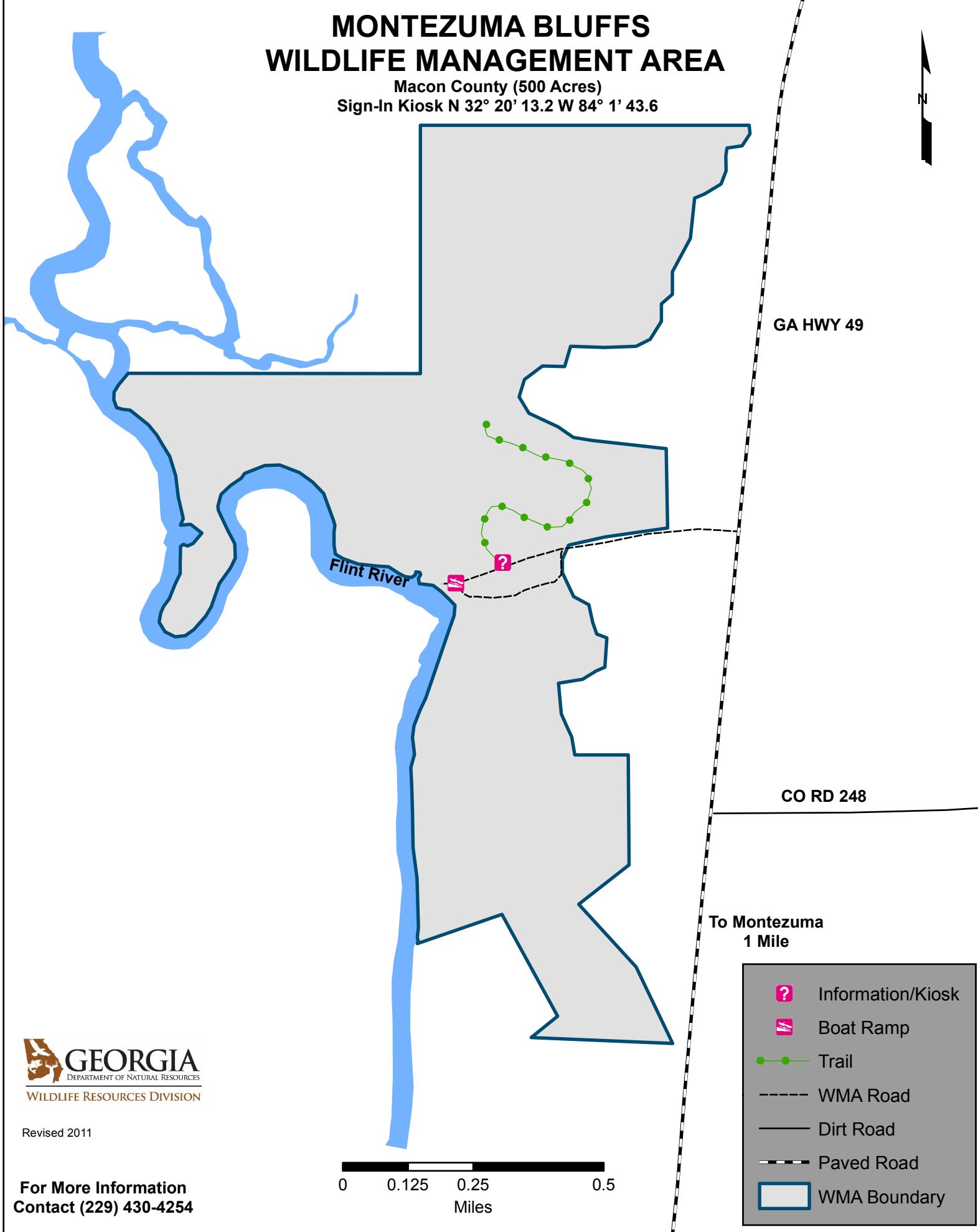


MONTEZUMA BLUFFS WILDLIFE MANAGEMENT AREA

Macon County (500 Acres)
Sign-In Kiosk N 32° 20' 13.2 W 84° 1' 43.6






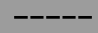



 **GEORGIA**
DEPARTMENT OF NATURAL RESOURCES
WILDLIFE RESOURCES DIVISION

Revised 2011

**For More Information
Contact (229) 430-4254**



To Montezuma
1 Mile

-  Information/Kiosk
-  Boat Ramp
-  Trail
-  WMA Road
-  Dirt Road
-  Paved Road
-  WMA Boundary