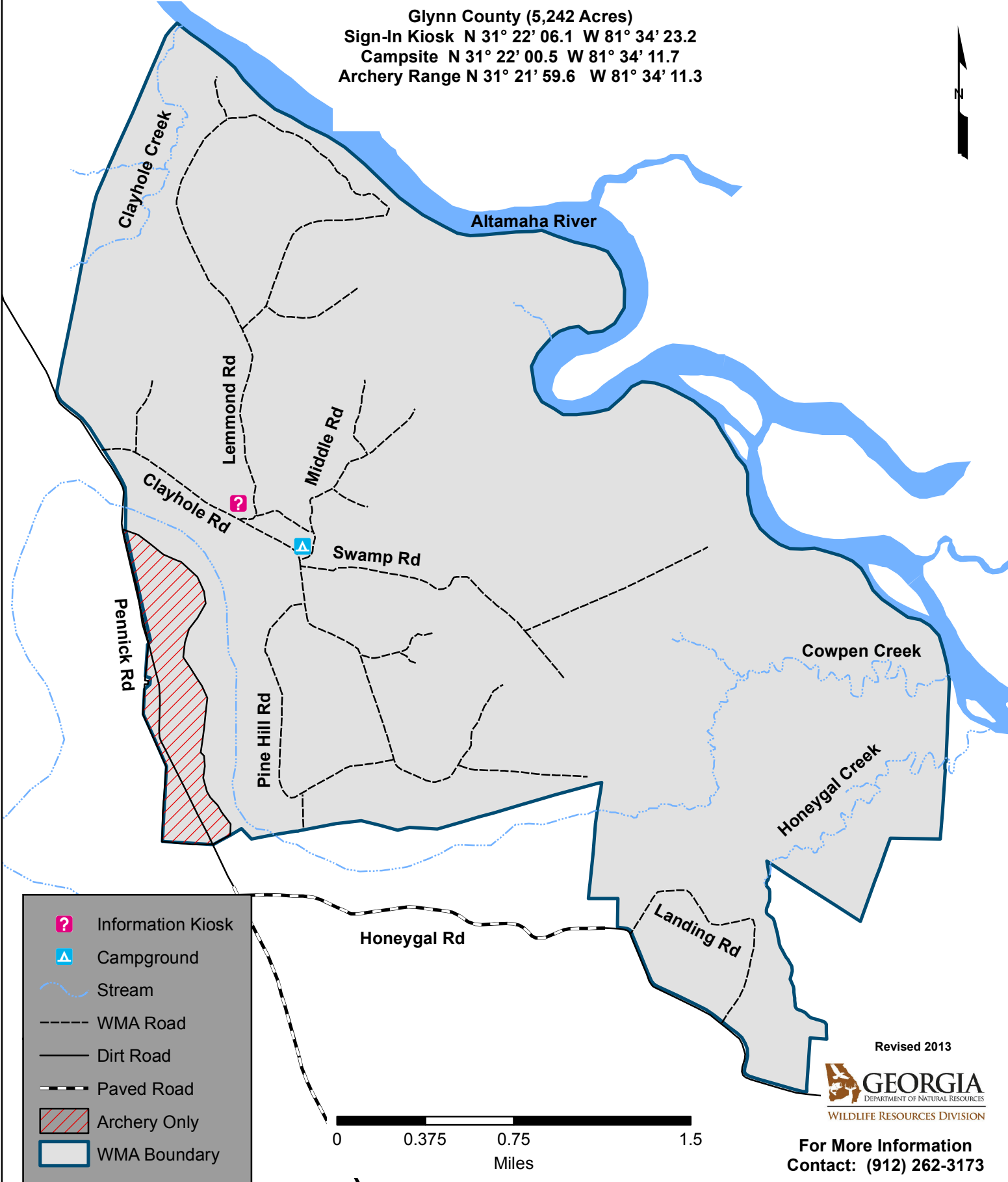
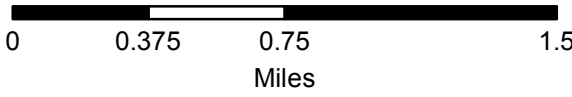


# CLAYHOLE SWAMP WILDLIFE MANAGEMENT AREA

Glynn County (5,242 Acres)  
Sign-In Kiosk N 31° 22' 06.1 W 81° 34' 23.2  
Campsite N 31° 22' 00.5 W 81° 34' 11.7  
Archery Range N 31° 21' 59.6 W 81° 34' 11.3



	Information Kiosk
	Campground
	Stream
	WMA Road
	Dirt Road
	Paved Road
	Archery Only
	WMA Boundary



Revised 2013  
  
**GEORGIA**  
DEPARTMENT OF NATURAL RESOURCES  
WILDLIFE RESOURCES DIVISION

**For More Information  
Contact: (912) 262-3173**