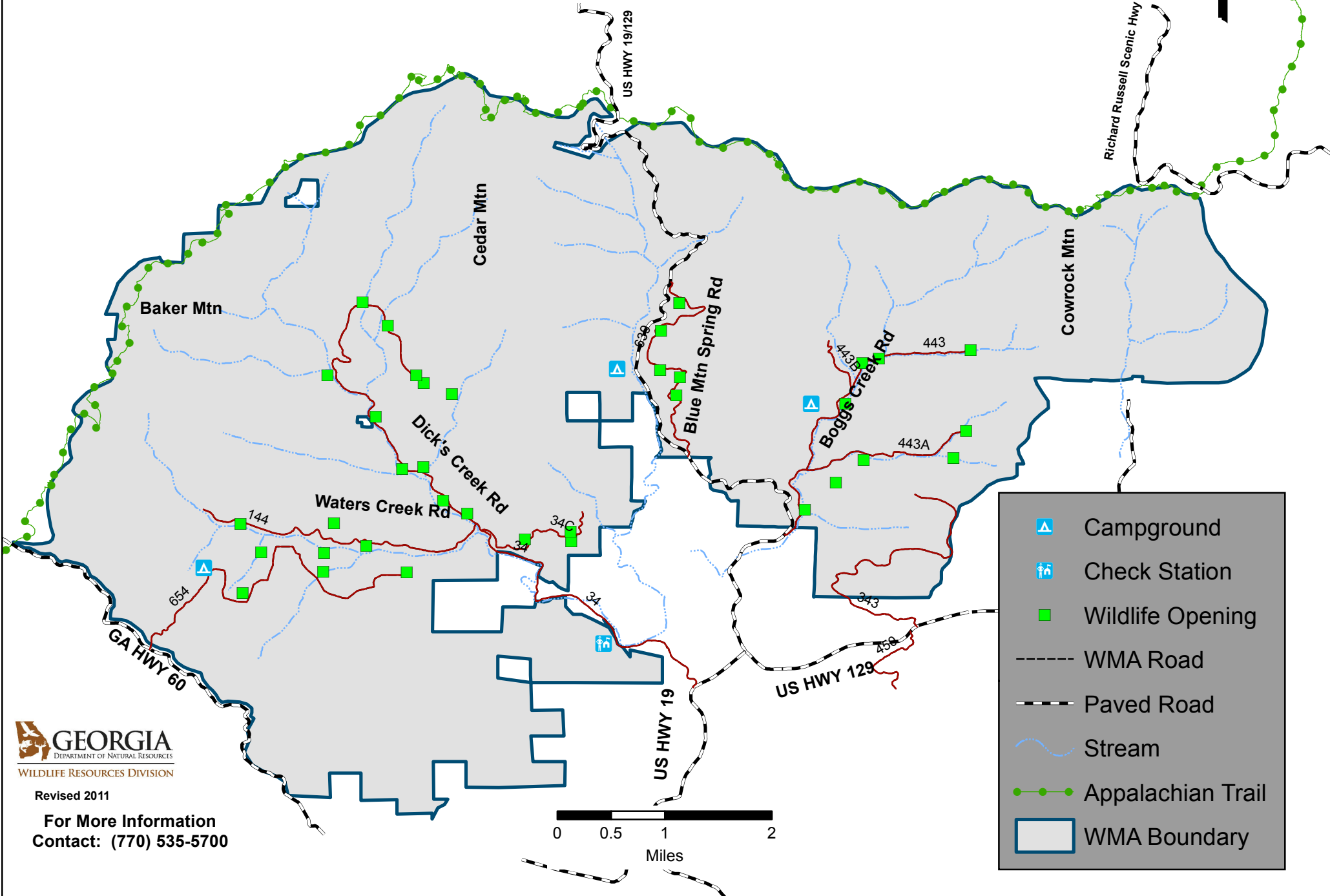


# CHESTATEE WILDLIFE MANAGEMENT AREA

Lumpkin County (25,000 Acres)  
Check Station N 34°39' 53.8 W 83° 55' 10.2



- Campground
- Check Station
- Wildlife Opening
- WMA Road
- Paved Road
- Stream
- Appalachian Trail
- WMA Boundary

**GEORGIA**  
DEPARTMENT OF NATURAL RESOURCES  
WILDLIFE RESOURCES DIVISION

Revised 2011

For More Information  
Contact: (770) 535-5700